

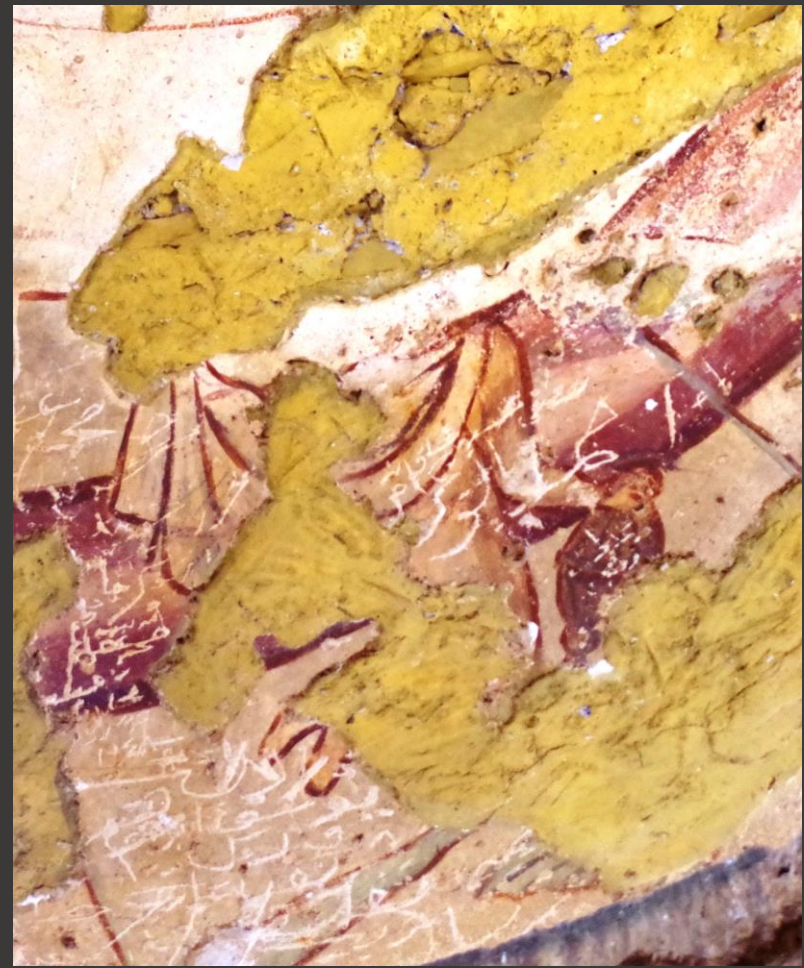
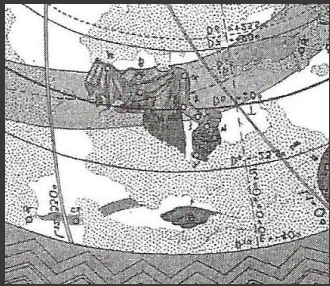




Andromeda with Cepheus below



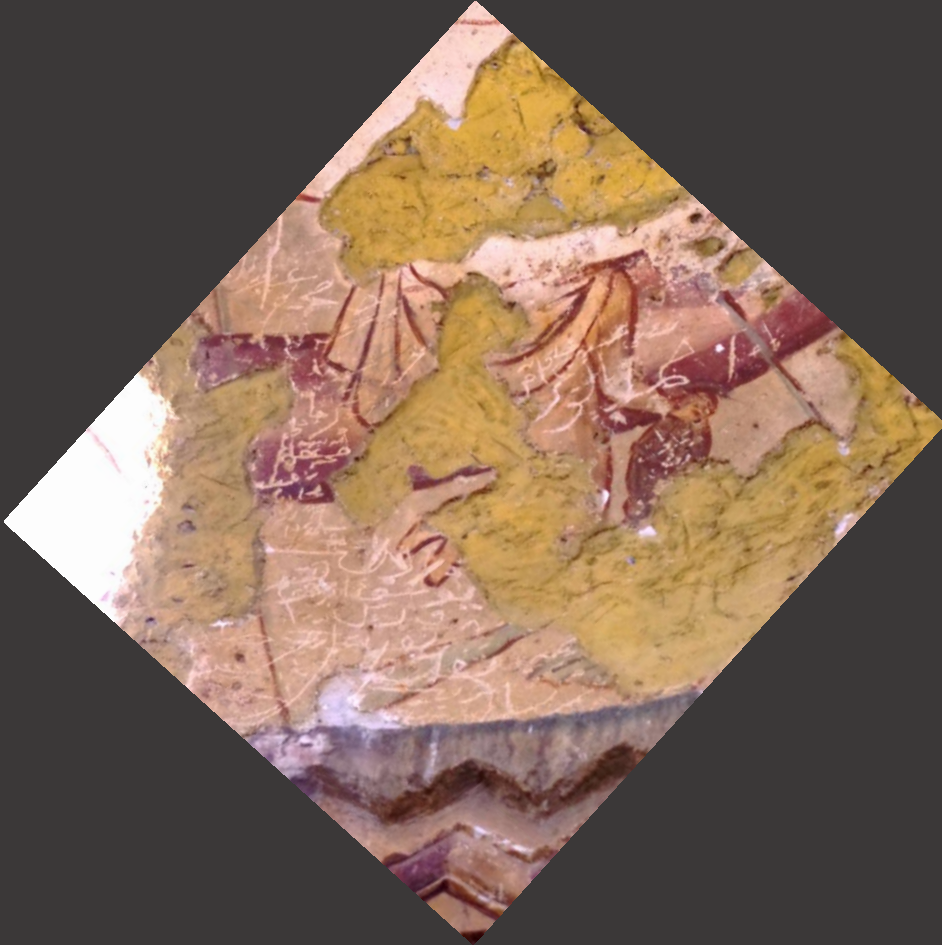
Andromeda with Cepheus below, Cygnus above



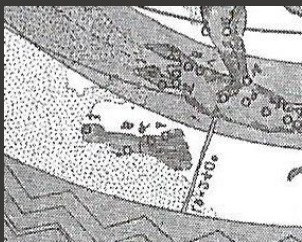
cf. Beer 1932, p. 301 (reversed)

n.b.-- facing away from the viewer (?), clothed with long mantle, left arm raised (?), urn held low in right hand from which water pours beneath his feet



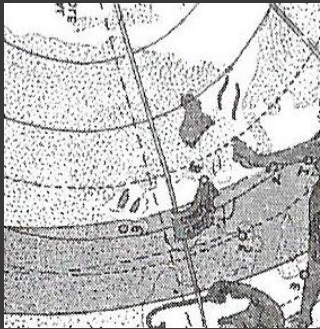




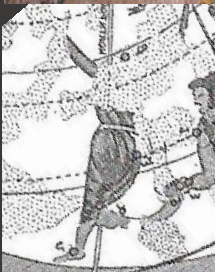


cf. Beer 1932, p. 301 (reversed)

n.b. – Beer seems to identify this as CMa, but could be Ara tipped on side with bottom rim upwards to right



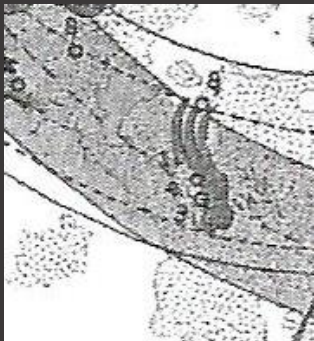




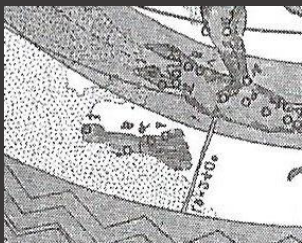
cf. Beer 1932, p. 301 (reversed)

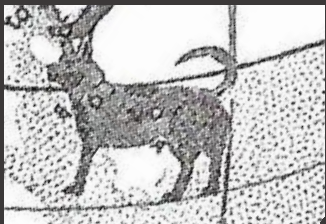
n.b. -- *tunica exomis*, facing away from viewer (?), left hand raised and holding stick, right leg stepping up



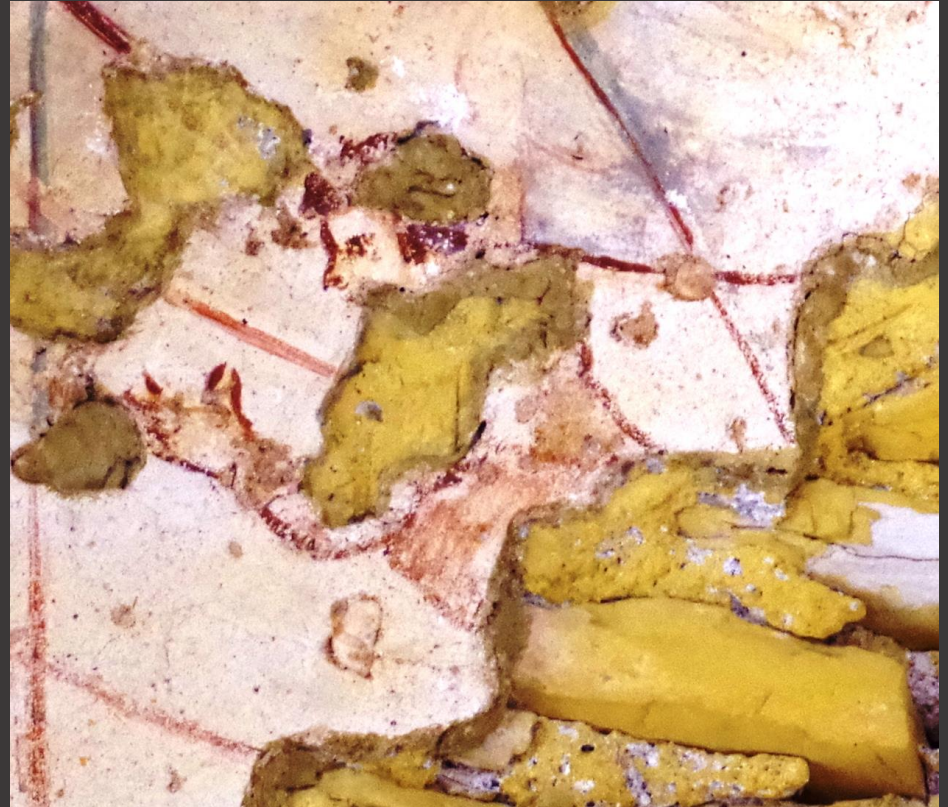


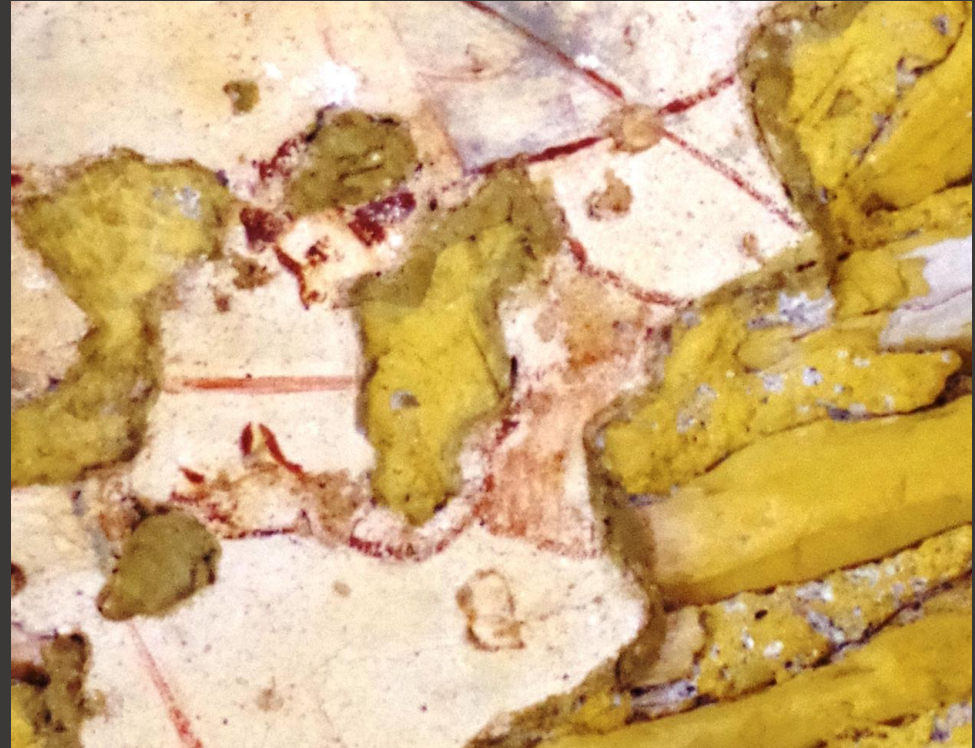
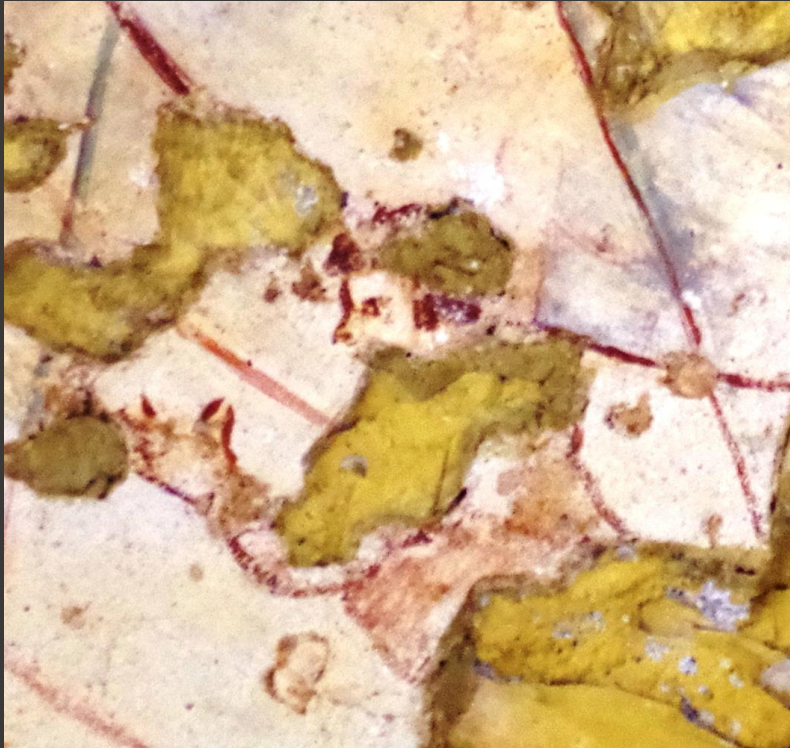














cf. Beer 1932, p. 299 (reversed); note that he includes legs as if Cepheus were kneeling

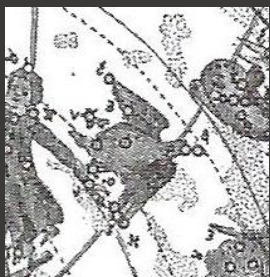
n.b. -- facing the viewer; only upper half of body (?) both hands raised with elbows bent





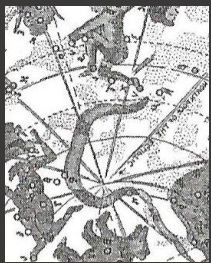






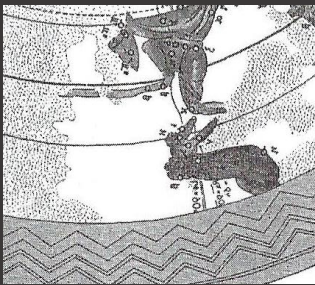




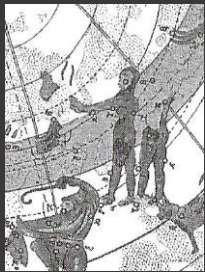






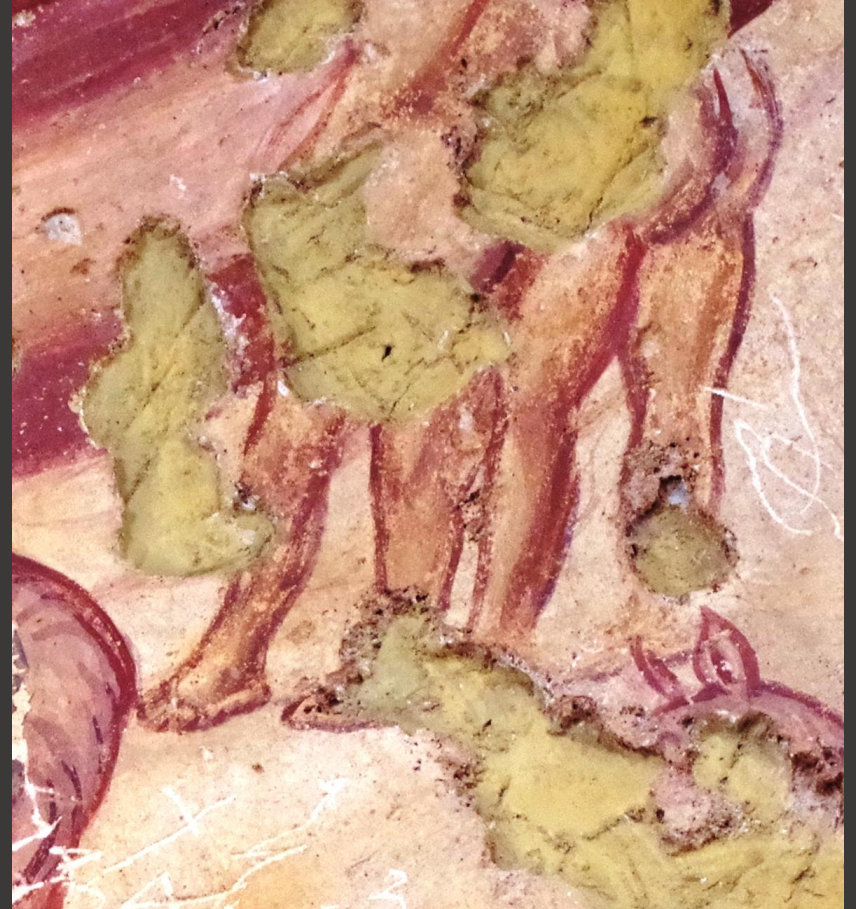


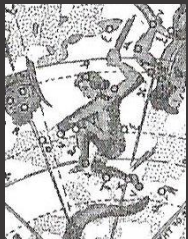




cf. Beer 1932, p. 299 (reversed)

n.b. -- two nude youths (note 'Eastern' profile), standing, facing away from viewer, left Twin arm extended to touch Auriga's elbow, Canis Minor beneath right Twin





cf. Beer 1932, p. 299 (reversed)

n.b. – nude and facing the viewer with club in raised right hand, sits on the circle with left leg dangling below

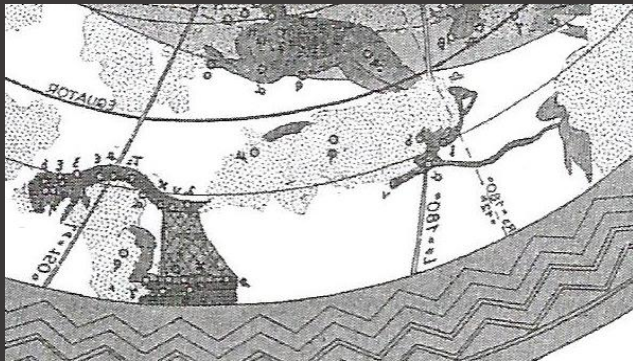




Hydra

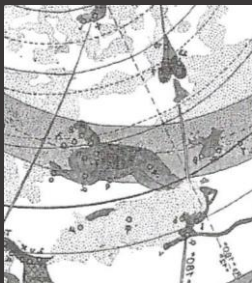
Crater

Corvus



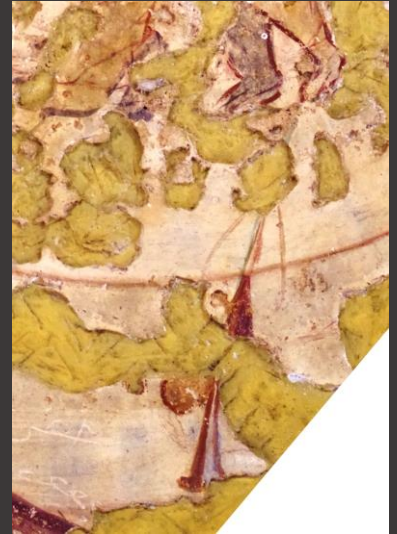
cf. Beer 1932, p. 299 (reversed)

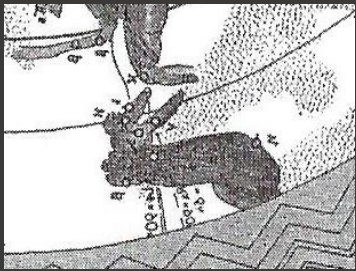
n.b. – Hydra moves to the left, with his small, doglike head raised (not as large as Beer’s record); Crater as a cup and Corvus with wings outstretched



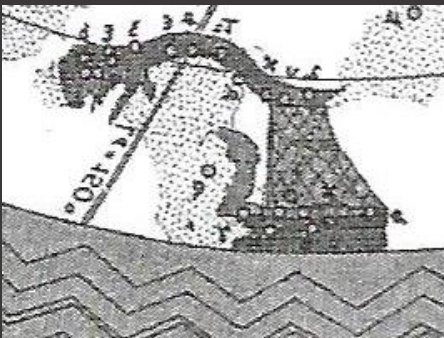
cf. Beer 1932, p. 299 (reversed)

n.b. – leaps to the left, tail raised in a curl; Beer identifies the shape above as Ptolemy's ivy leaf









cf. Beer 1932, p. 299 (reversed)

n.b. – possible webbing of the rigging beneath the belly of Hydra and planking below that, mast or edge of hut at right (?)



hut?

mast?

rigging

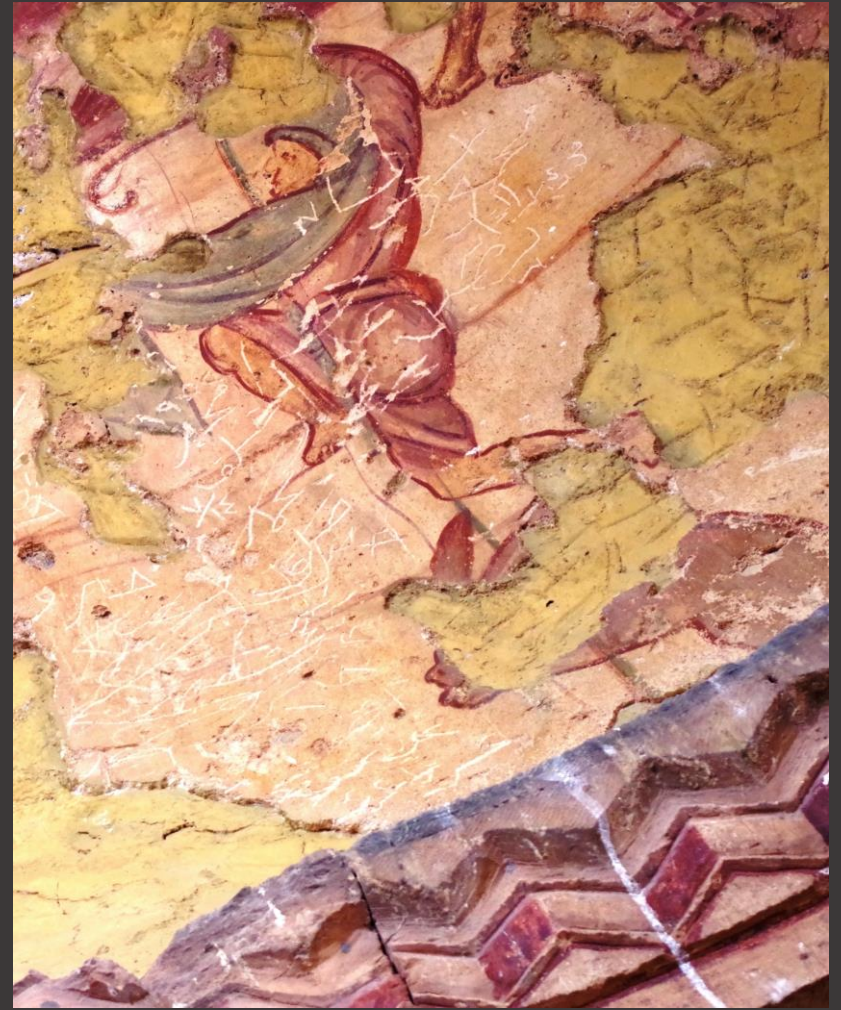
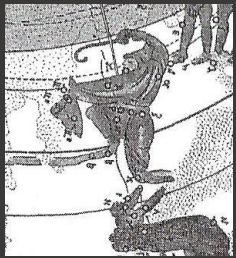
planks

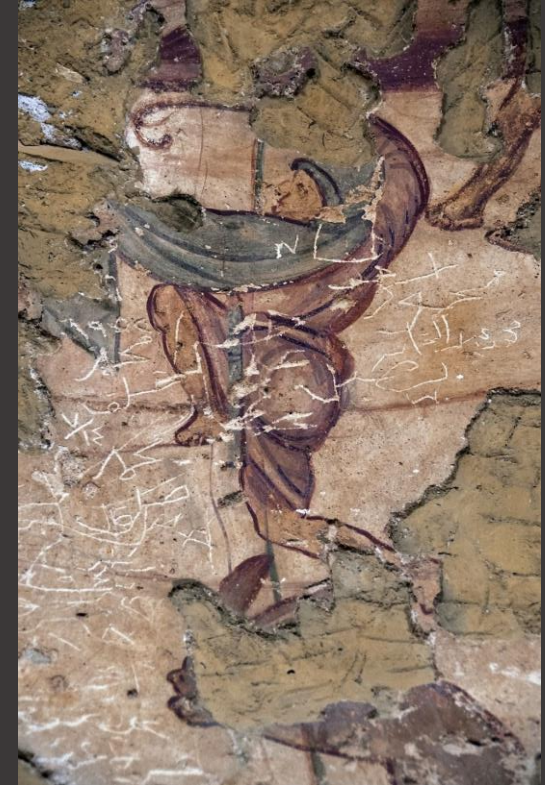
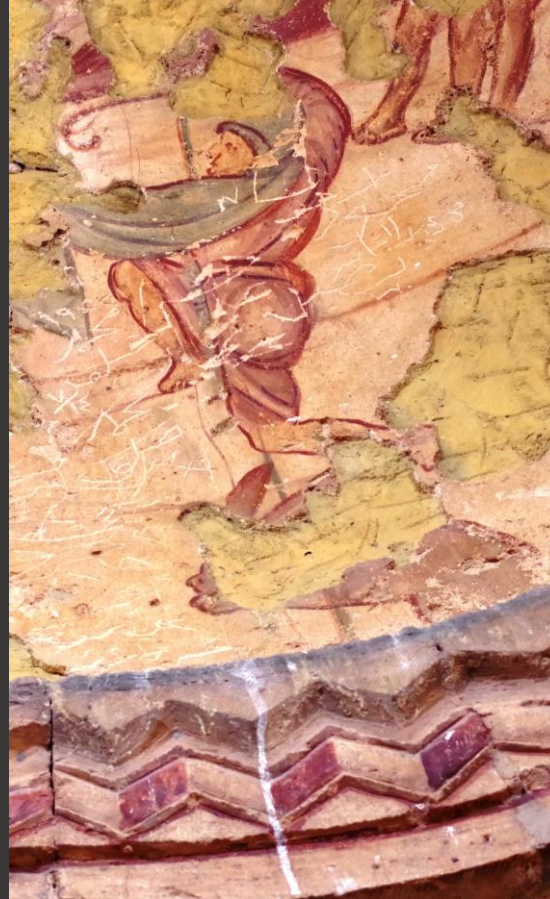


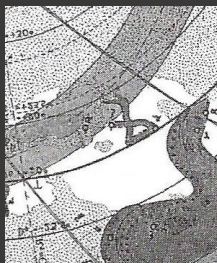
cf. Beer 1932, p. 299 (reversed)

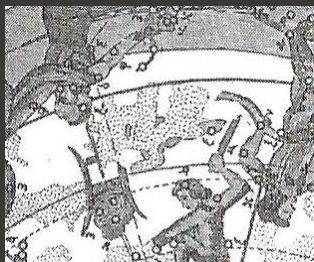
n.b. – nude, standing away from viewer, snake horizontal with face to left, both Oph feet on back of Sco

















©Petr Prebinda



© Manuel Cohen



