



Wolfenbüttel

Herzog August Bibliothek

Ms 18. 16. Aug 4°

Hyginus, *De astronomia*

South German

12th century

text

ff. 1r-35r Hyginus, *Astronomica*, Books I-IV

ff. 1r- ____ Hyginus. M. Fabio plurimam salutem. Et si te studio grammaticae artis inductum non solum versuum moderatione – in simili causa posse constitui suspicamur ... (= Hyginus, *Astronomica*, I, 1-9; cf. Viré 1992, p.1-13)

fol. ____ Sed quoniam quae nobis de terrae positione dicenda fuerunt ... (= Hyginus, *Astronomica*, II, preface cf. Viré1992, p. 14)

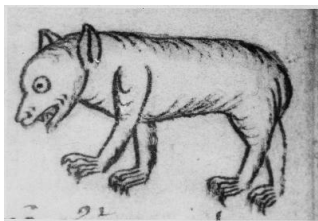
fol. ____ ... Nos autem omnium corporum deformationem dicere instituimus. (= Hyginus, *Astronomica*, II, 43; cf. Viré1992, p. 94)

ff. ____ Igitur incipiemus a polo boreo protinus dicere – cum piscibus stellarum omnino . xii. (= Hyginus, *Astronomica*, III, 1-40; cf. Viré 1992, pp. 95- 124)

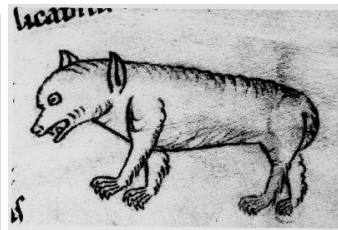
f. ____ Quae ad figurationem syderum pertinent ad hunc – dicta. Reliqua protinus dicemus. (= Hyginus, *Astronomica*, III, 40; cf. Viré 1992, p. 124)



ff. _____ Quoniam initio sphaerae circuli quinque quomodo efficerentur — Annum volverunt esse cum sol ab aestivo circulo redit. (= Hyginus, *Astronomica*, IV, 1-19; cf. Viré 1992, p. 125-57)



fol. _____



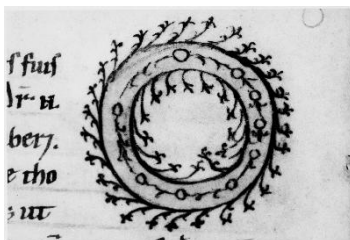
fol. 5r



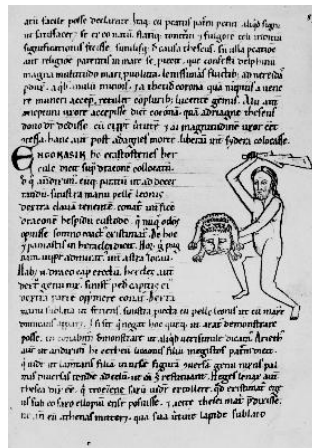
fol. 6r



fol. 6r



fol. 7v



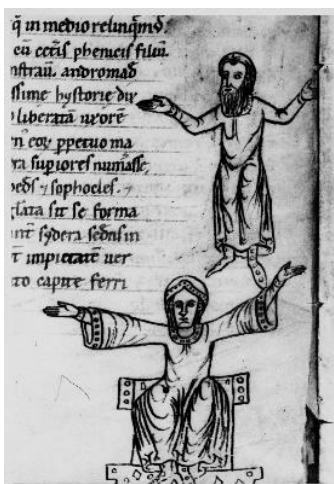
fol. 8r



fol. 8v



fol. 9v



fol. 9v



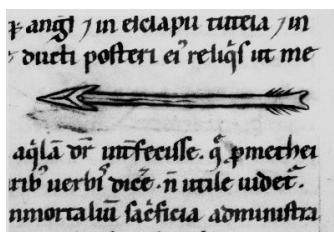
fol. 10r



fol. 10v



fol. 11v



fol. 12r



fol. 13r



fol. 13v



fol. 14r



fol. 14v



fol. 15r



fol. 15v



fol. 16v



fol. 16v



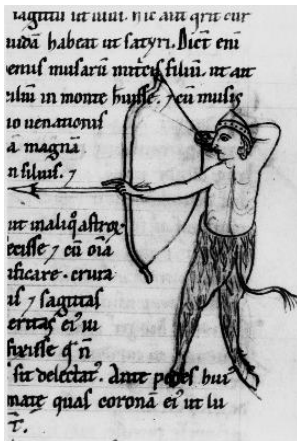
fol. 17r



fol. 17v



fol. 17v



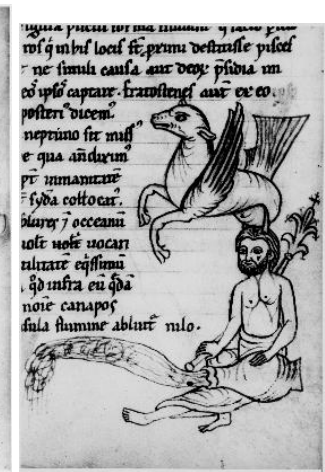
fol. 18r



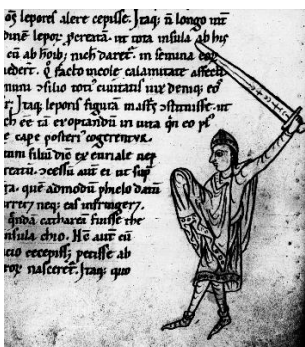
fol. 18r



fol. 18v



fol. 18v



fol. 19r



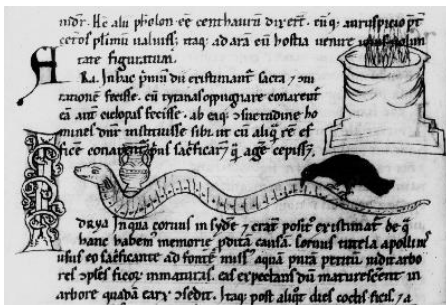
fol. 19v



fol. 20r



fol. 20r



fol. 20v



fol. 21v

-
- fol. **URSA MAIOR** walks to the left with its mouth open, long toenails and a very round eye.
- fol. 5r **URSA MINOR** walks to the left with its mouth open, long toenails and a very round eye.
- fol. 6r **DRACO** is a snake placed vertically on the page with 4 bends in his body. He faces to the left and has a triangular comb on his head and a triangular beard.
- BOOTES** faces the viewer and walks to the left, wearing a toga that is draped over his left shoulder and exposes his right shoulder and right arm. He holds his right arm out in front of him and holds his left arm vertically above his head.
- fol. 7v **CORONA BOREALIS** is a stylised wreath with nine circlets sets within concentric circles decorated with leafy lines.
- fol. 8r **HERCULES** stand to the left, facing the viewer, with his knees slightly bent. He is nude and bearded. He holds the lion by its stomach (the face and 4 legs visible) in front of him in his left hand. He holds his club in his right hand above his head.
- fol. 8v **LYRA** is an urn-shaped lyre with a fat belly and a triangular top with 5 strings and 2 sounding holes.
- fol. 9v **CYGNUS** is positioned so that its belly faces the viewer. He holds its wings out to either side and turns his head to the left. It has a very long beak.



CEPHEUS faces the viewer and turns slightly to the left. He has a very long beard and wears a long, loose tunic. He has circlets on his shoes. He holds his hands out to either side with his elbows bent so they form a 'W'.

CASSIOPEIA is seated in a low-backed throne, wearing a long dress that has a hood that covers her head. It is trimmed on the hood, and the wrists with a band with circlets on it. She holds her hands out to either side at shoulder height, but her elbows are not bent.

fol. 10r **ANDROMEDA** walks to the left. She has a long loose tunic that has bands at the neck, waist, cuffs and hem that are decorated with circlets. Her hair is long and braided and she holds her right hand in front of her, down by her side and holds her left hand raised, trailing behind her.

PERSEUS lunges to the left and is dressed in a long loose tunic, that is belted at the waist and has decorative bands at the neck and the cuffs. It is not clear if he is facing toward or away from the viewer as his legs and hands seem to suggest that he faces away, but his neck, collar and face suggest he faces towards the viewer. He holds the Medusa's head, upside-down by its hair, in his leading hand and the following hand is raised and holds a sickle.

fol. 10v **AURIGA** stands in his *biga* that is drawn by two horses that leap to the right. He is dressed in a long, loose tunic with a belt and a decorative band at the hem. There seems to be a triangular-shaped cloak that rises to the left, behind his head. He faces the viewer and holds the reins in his left hand. There are two small goats facing each other standing on his left arm. He raises his right arm and _____ (cut off by side of picture)

fol. 11v **OPHIUCHUS** stands facing the viewer and is nude. He holds the *Serpens* horizontally so that it never rises above the level of his hips. It wraps around him, making an 'X' in front of his belly and its somewhat porcine face points to the right.

fol. 12r **SAGITTA** points to the left.

fol. 13r **AQUILA** stand to the left with his wings outstretched and his right foot raised.

fol. 13v **DELPHINUS** is shaped like an 'L' with its head rising towards the top of the page and its body horizontal. It faces to the right, has a round eye, tusks coming from its lower jaw and an acanthus-leaf tail.



- fol. 14r **PEGASUS** is half a winged horse that faces to the left. Its tail ends in a tapering curl that is tucked under its body.
- fol. 14v **TRIANGULUM** is two concentric triangles with a wavy line in between and 1 circlet in each angle (=stars?).
- fol. 15r **ARIES** leaps to the left with both his forefeet curled under, He looks back over his shoulder and upwards towards the top of the page. He has fleecy hair along his backbone and tail.
- fol. 15v **TAURUS** is depicted as a full bull, sitting to the right. Both his front legs are curled under and his tail is wrapped between his hind legs.
- fol. 16v **CANCER** is a crayfish that faces to the left. It has two large claws and 6 legs on either side.
- GEMINI** are two youths who are dressed in identical three-quarter-length tunics with decorative hems and long cloaks over their shoulders. Their leggings are also covered with decorative circlets. They hold their inner arms over each other's shoulder. The left Twin raises his hand in salutation and the right Twin hides his under his cloak.
- fol. 17r **LEO** leaps to the left with both his forefeet raised. He sticks his tongue out and his tail wraps between his hind legs.
- fol. 17v **Virgo** is a young maiden dressed in a long robe with decorative banding over a pleated, inner dress. Her hair is long and the front sections have been braided, while the back hangs free. She faces slightly to the left and holds a plant in her right hand towards which she gesticulates with her left. **Scorpio** is like a crayfish, but it has a band at the beginning of its tail which then continues in a tapering fashion. It faces to the left and has two very large front claws and 4 forked legs on either side.
- fol. 18r **SAGITTARIUS** is a satyr who faces away from the viewer (his tail is visible) and to the left. He wears a small conical hat, but his human half is nude. He holds the bow with his left hand and pulls the string with his right. **Capricorn** faces to the left. It has a very long beard and long gazelle's horns and appears to stand on its left forefoot, while raising its right forefoot. It has a corkscrew tail that ends in a fishtail.
- fol. 18v **AQUARIUS** is a youth who stands to the left. He is nude except for a conical hat and a long cloak that is held by a rectangular clasp at his neck. He holds the urn



out horizontally in front of him and holds its foot with his left hand and its belly with his right. It pours water in front of him.

PISCES swim in opposite directions, both with their back upwards and connected at their mouths by a wavy cord.

CETUS faces to the left. It has a head like a shorn lamb and paws for feet, wings on its shoulders and a curled tail that ends in a fishtail.

ERIDANUS sits facing the left. His torso is nude, but his bottom half is covered by a drape. The urn lies beside him, horizontally and he rests his left hand on its belly. Water pours in front of him to the left. He rests his left hand on the base of a large front that has an almost acanthus top and a cross at the very top of its head. He is bearded and the way that his head abuts the bottom of Cetus suggests that he might have horns on his head.

fol. 19r **LEPUS** _____.

ORION walks to the left and is dressed in a knee-length tunic with a similar cape that covers his right arm entirely. He has a conical hat on his head. He raises a very long, straight sword above his head with his left hand.

fol. 19v **CANIS MAIOR** runs to the left, has its tongue out and tail raised.

fol. 20r **CANIS MINOR** runs to the left, with its tongue out and its tail lowered.

NAVIS is depicted as half a ship with 4 prongs on its right side. It has a mast that seems to be covered by something like a dalmatic. Its stern ends in a circular shape and it has a highly decorated hull with two steering oars.

CENTAURUS walks to the left with his right forefoot raised. His human half is nude. He carries a trident in his left hand (one end of which seems to be knotted) and the fork end is held uppermost. In his right hand, he holds **LUPUS** (a rabbit) in front of him by its heels.

fol. 20v **ARA** is a cylindrical shape with flames coming from the top.

HYDRA is a long snake with a animal head that moves towards the left. It has a two-handled **CRATER** right behind his head and a black **CORVUS** standing facing the head and pecking.

fol. 21v **PISCIS AUSTRINUS** is a fish that swims to the left and has large tusks coming from his lower jaw.



notes

Pictorially and textually, this manuscript is part of a pair with the later, south German manuscript, London BL Arundel 339.

bibliography

VIRÉ 1981, pp. 176-7.

12th century, S. German; 1- 35r; 4 books

VIRE 1992, p. xxii.

memb, 12th century; South German moastery; ff. 35 (220 x 155 mm) 31 lines; 40 figures of the stars (ff 4v-20v) to Book II.

von HEINEMANN 1900, pp. 249-50.